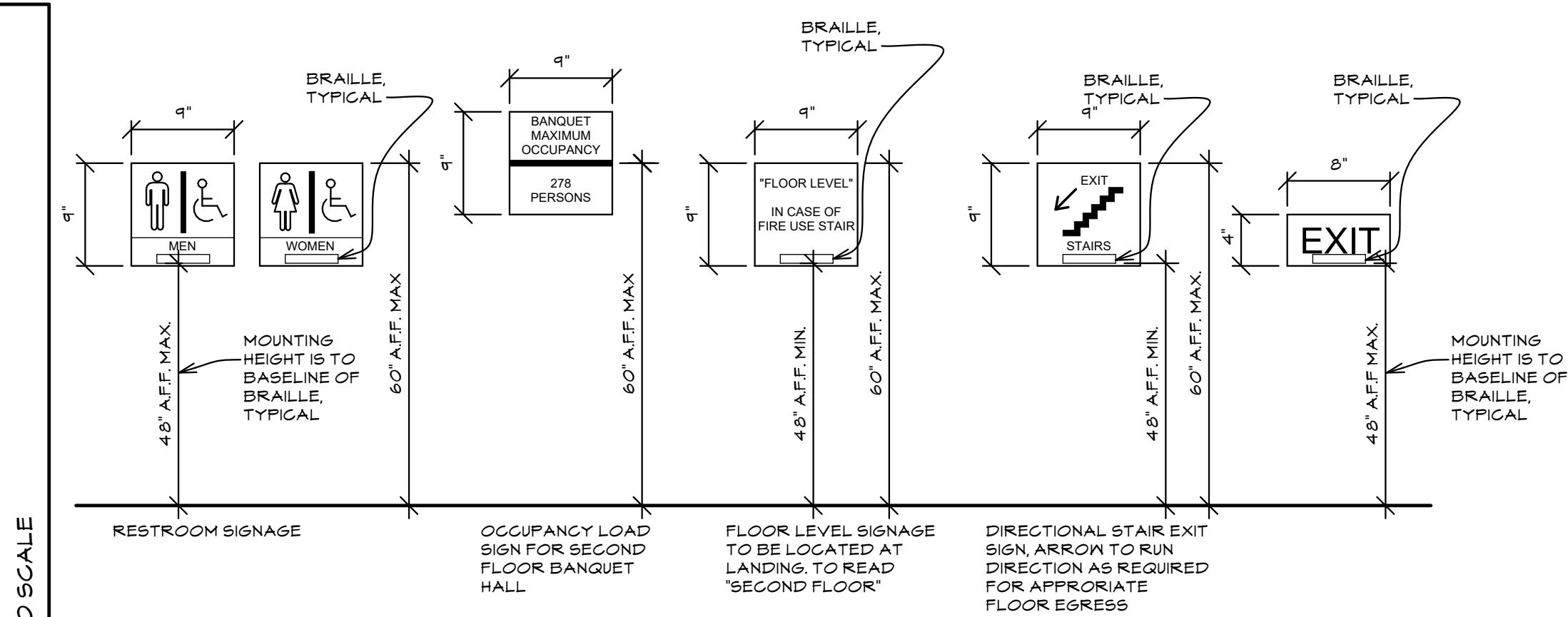
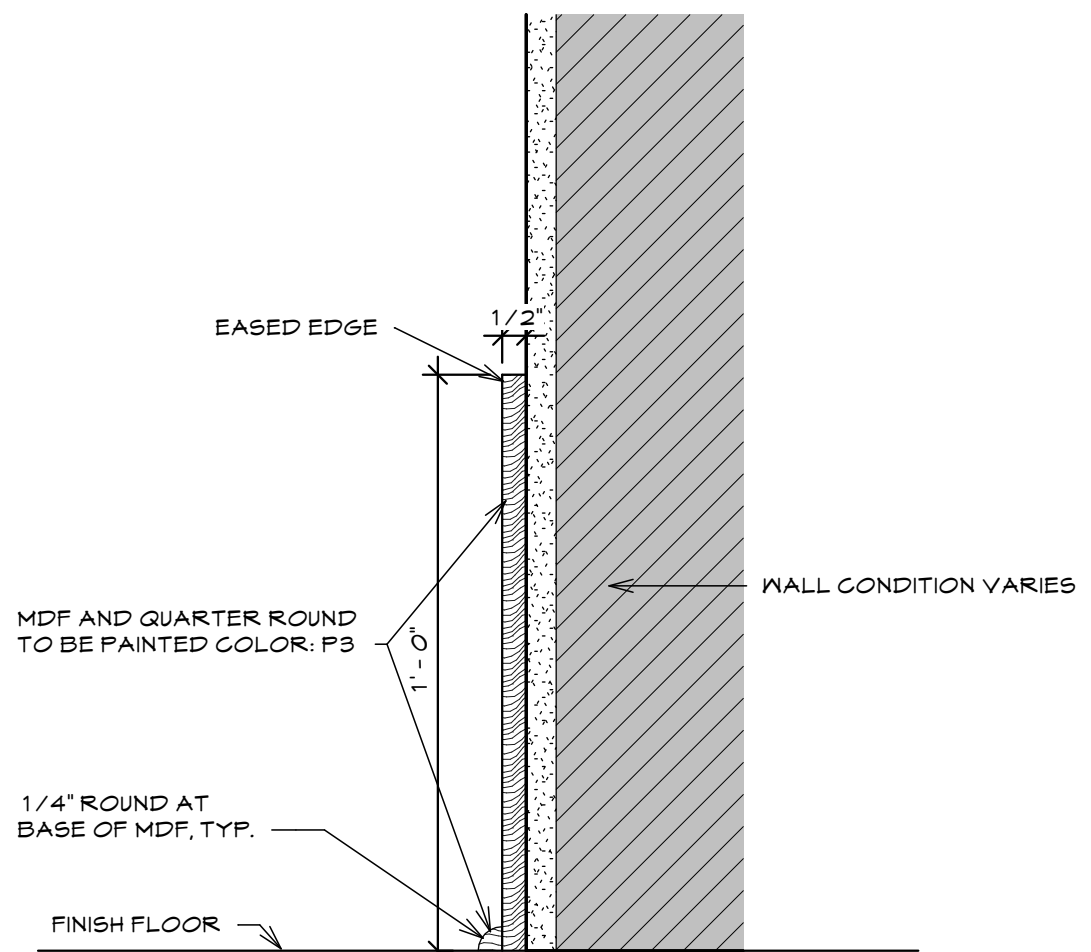
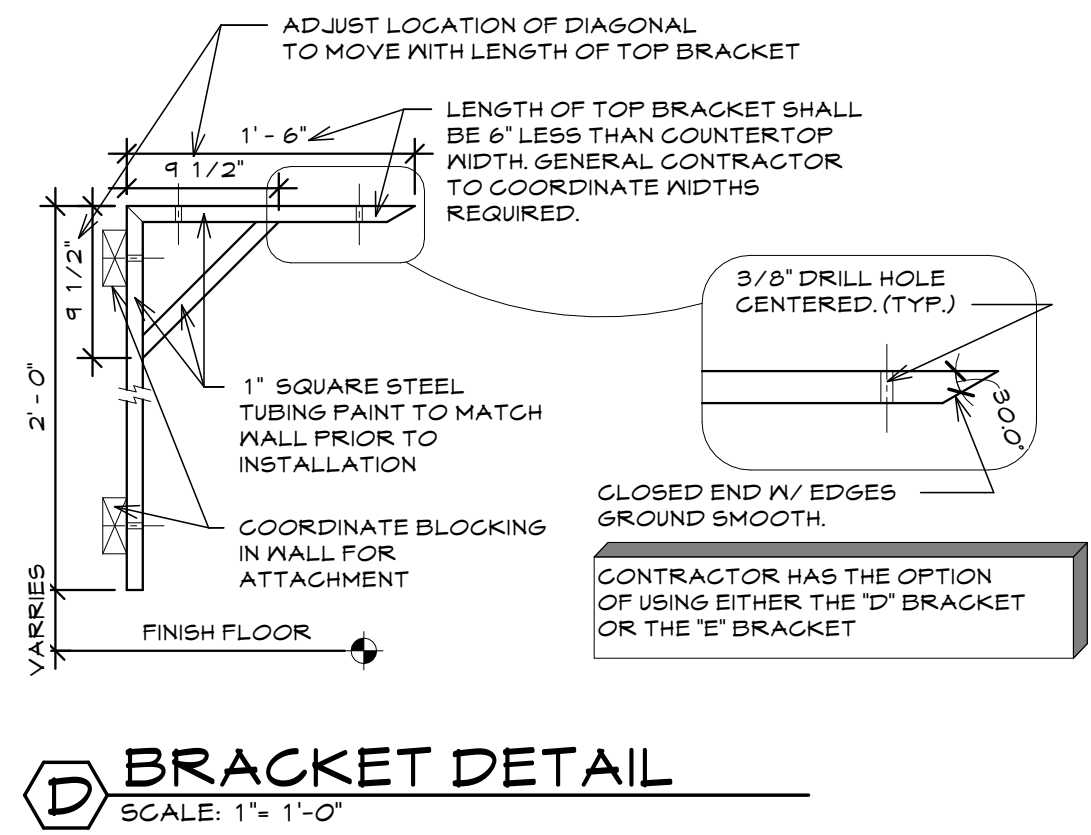


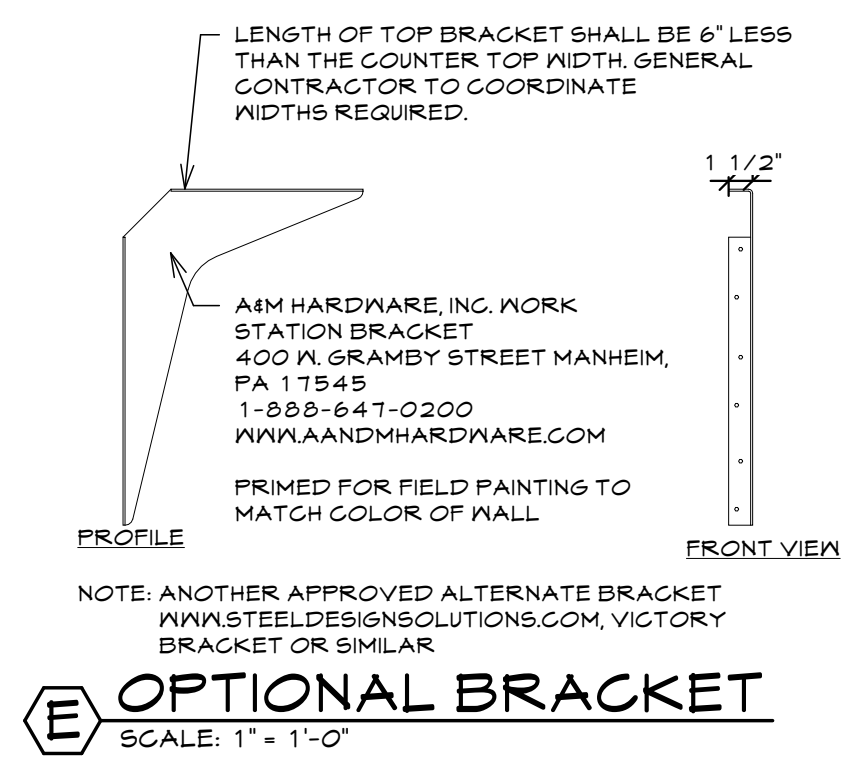
## SIGNAGE LEGEND



- PROVIDE SIGNAGE AS PER THE DRAWINGS AND AS FOLLOWS
1. SIGN TYPE: FLAT SIGNS WITH ENGRAVED AND PAINL MEDIA AS SPECIFIED ENDS AND CORNERS: SQUARE, HALL MOUNTING OF ONE-SIDED SIGNS: TAPE ADHESIVE
  2. PROVIDE TACTILE SIGNAGE WITH LETTERS RAISED MINIMUM 1/32" AND DRAID I BRAIL
  3. CHARACTER HEIGHT: 5/8" MINIMUM - 2" MAXIMUM
  4. CHARACTER FONT: HELVETICA, ARIAL, OR OTHER SANS SERIF FONT
  5. CHARACTER CASE: UPPER CASE ONLY
  6. BACKGROUND COLOR: BEST SIGN SYSTEMS, MP25044 DURANGO GREY - LRV 24.6
  7. CHARACTER COLOR: BEST SIGN SYSTEMS, MP20148 MEDITERRANEAN SKY - LRV 51.7



① **MDF BASE**  
SCALE: 3" = 1'-0"



**OPTIONAL BRACKET**  
SCALE: 1" = 1'-0"